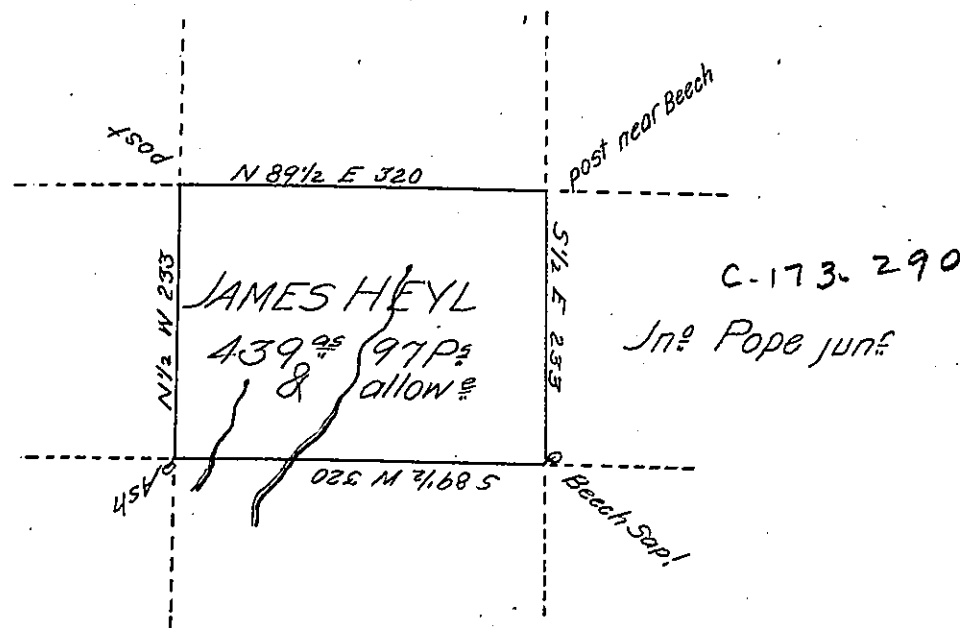


C. 49-181

Robt Tussell

Jo^s Heyl



Samuel Heyl

A Draught of a tract of land called _____ Situate in the County of Luzerne, adjoining Sam^l Heyl & others Surveyed the 16th day of Novem^r 1792 for James Heyl in pursuance of a warrant bearing date the 3^d day of April 1792 Containing Four hundred thirty nine Acres & ninety seven perches & the usual allowance of Six P^r Cent for roads &

To Dan^l Brodhead Esq^r }
 Surveyor General }

Ant^y Crothers D.S.

IN TESTIMONY that the above is a copy of the original remaining on file in the Department of Internal Affairs of Pennsylvania, made conformably to an Act of Assembly approved the 16th day of February, 1833, I have hereunto set my Hand and caused the Seal of said Department to be affixed at Harrisburg, this third day of May 1905

Loac R Brown
 Secretary of Internal Affairs.